

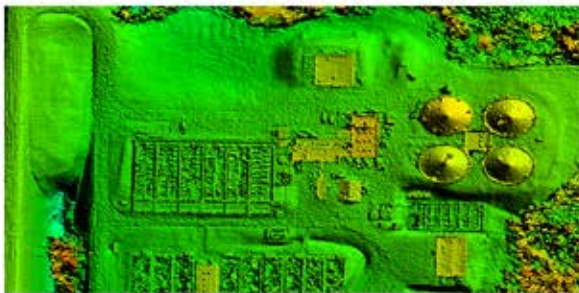


# Unmanned Aerial Vehicle (UAV) Mapping Services

## Accurate, High Resolution, Digital Mapping Products



**Orthophoto** - An orthophoto, orthophotography or ortho image is an aerial photograph geometrically corrected ("orthorectified") such that the scale is uniform: the photo has same lack of distortion as a map. It is a photographic map. Since an orthophoto has uniform scale, it is possible to measure directly on it like other maps. An orthophoto may serve as a base map upon which other digital mapping related information can be overlaid



**Digital Surface Model (DSM)** - A DSM is an elevation model that includes the tops of building, trees, powerlines, and any other objects. Commonly this is seen as a canopy model and only 'sees' ground where there is nothing else overtop of it. DSM is a first-reflective- surface model that contains elevations of natural terrain features in addition to vegetation and cultural features such as buildings and roads.



**3d models**- The world is not flat and you are no longer limited to abstraction. Use 3D models to see your data in its true perspective, to make better decisions, and to communicate your ideas more effectively and efficiently. Data delivered in a 3D suitable format will enable users to "3-D enable" their geographic products



Contours, infrastructure, and other GIS data can be created from the orthophotography and / or the DEM. These layers of GIS data, such as roads, building footprints, and many more are more than just points, lines, or polygons on a map. They can have powerful data behind them, attributes such as pipe diameter, year built, condition, etc can be used for planning and data analysis. Get the answers to your questions, and to questions you don't even know to ask yet.

